

ROGERS®

Rotary Screw Vacuum Pumps



KRVP Series

Simple, Efficient, Reliable Vacuum

Fixed and Variable Speed ■ Lubricant-Injected
Single-stage ■ Air or Water-Cooled ■ 15 - 250 HP



ROGERS® KRVP Series

The Vacuum Pump Components

Inlet Filter/Silencer

Low pressure drop, high capacity design.
Easy access for element change.

Heavy Duty Heat Exchanger

Air or water cooled lubricant cooler available.

Air/Lubricant Separator

High efficiency, reliable separation.

Motor

NEMA frame, high efficiency, c-face, ODP motors. TEFC and inverter duty available.

Airend

Designed and built for high performance and longevity.
Direct driven with no gears at a maximum speed of 3600 RPM.

Inlet Control Valve

Designed for reliable, efficient capacity control.

Durable Sound Enclosure

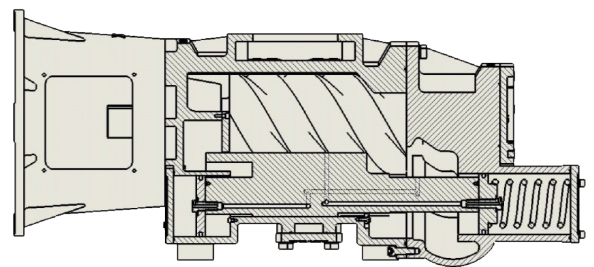
Provides for quiet operation.
Powder coated frame and removable panels provide easy access for maintenance.

Integrated Lubricant Pump

Maintains essential lubricant flow throughout operating conditions.

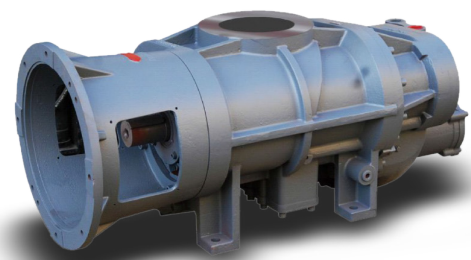
Innovative Flexible Screw Airend Design

Discharge port is dynamically optimized throughout the vacuum range to reduce power consumption and startup torque. This simple and patented optimization does not require complicated electrical controls and is accomplished mechanically using internal pressure.



Pressure Sensitive Air Feed at the End of Compression

- Helps to discharge lubricant
- Increases vacuum level
- Reduces discharge noise and vibration
- Improves air end reliability



KRVP Series Performance Data

Model	Motor HP	Speed RPM	Capacity ACFM	End Vacuum "HgV
KRVP-15	15	2700	206	29.9
KRVP-20	20	3600	274	29.9
KRVP-30	30	3600	442	29.9
KRVP-50	50	3600	715	29.9
KRVP-60	60	3600	1030	29.9
KRVP-75	75	3600	1277	29.9
KRVP-100	100	3600	1572	29.9
KRVP-125	125	3600	1939	29.9
KRVP-150	150	3600	2343	29.9
KRVP-250	250	3600	3870	29.9

KRVP Series Standard Equipment

Standard Equipment

- Heavy duty sound enclosure
- C-face, NEMA frame, ODP main motor
- UL or CSA listed control panel
- Modulating full-closure inlet control and check-valve
- Separator pressure gauge
- Temperature regulating valve
- Air or water-cooled
- Synthetic lubricant
- Positive flow lubrication/seal fluid pump
- Lubricant filter, 12 micron
- Fluid level sight glass
- Cabinet fan

Available Accessories

Accessories may be required for various applications

- Inlet separators and process specific filtration
- Vacuum receivers
- Check valves and ball valves
- Lubricant mist exhaust filters
- Vacuum gauge
- System automation controls for multiple units
- NFPA 99 Control package (multiple units)
- Main Motor VFD



vGOAT Control Panel

Microprocessor based control panel with easy-to-read text screen and indicators. Optional PLC controls available with a high resolution touch screen panel.



ROGERS® delivers an ecologically friendly, energy efficient compressor and vacuum pump design.



**ROGERS
MACHINERY
COMPANY, INC.**

Since 1949

www.rogers-machinery.com
sales@rogers-machinery.com



Portland Branch and Corporate Office - Portland, Oregon
Offices and manufacturing powered in part by the sun.



Distributed by:

K Series

ROGERS Machinery Company, Inc.

3509 Galvin Rd.

Centralia, WA 98331

Phone: 360-736-9356

Fax: 360-736-8630

eMail: rogers-kseries@rogers-machinery.com

www.rogers-kseries.com



ROGERS® K Series family of compressors and vacuum pumps